

# Haematologica 2000; vol. 85, no. 5

## Contents

(indexed by Current Contents/Life Sciences and in Faxon Finder and Faxon Xpress, also available on diskette with abstracts)

### editorials and views

#### **The clinical utility of epoetin in cancer patients: a matter of perspective**

Giovanni Barosi, Monia Marchetti . . . . . 449-450

#### **Gene therapy for X-linked chronic granulomatous disease**

450

### original papers

#### **The expression of full length Gp91-Phox protein is associated with reduced amphotropic retroviral production**

Ilaria Bellantuono, Linda Suzanne Lashford, Joseph Anthony Rafferty, Leslie James Fairbairn . . . . 451-457

#### **Human herpesvirus 6 in hematologic diseases in China**

Xiao-Tong Ma, Yu-Hua Song, Dong-Mei Lu, Gui-Fan Mu, Ge Li, Lin-Xiang Ji, Ren-Chi Yang, Ke-Fu Wu . . 458-463

#### **Role of hepatocyte growth factor in the development of dendritic cells from CD34<sup>+</sup> bone marrow cells**

Ercüment Ovalı, Siret Ratıp, Alp Kibaroglu, Yavuz Tekelioglu, Mustafa Çetiner, Sami Kartı, Fazıl Aydın, Mahmut Bayık, Tevfik Akoglu . . . . . 464-469

#### **Geographic distribution of CDA-II: did a founder effect operate in Southern Italy?**

Achille Iolascon, Veronica Servedio, Ruggiero Carbone, Angela Totaro, Michele Carella, Silverio Perrotta, Sunitha N. Wickramasinghe, Jean Delaunay, Herman Heimpel, Paolo Gasparini . . . . . 470-474

#### **Differential expression of cellular prion protein on human blood and tonsil lymphocytes**

Nadine Antoine, Jean-Yves Cesbron, Bernard Coumans, Olivier Jolois, Willy Zorzi, Ernst Heinen . . . . . 475-480

#### **Detection of inv(16) and t(16;16) by fluorescence *in situ* hybridization in acute myeloid leukemia M4Eo**

Jesús María Hernández, María Belén González, Isabel Granada, Norma Gutiérrez, Carmen Chillón, Fernando Ramos, Josep María Ribera, Marcos González, Evarist Feliu, Jesús San Miguel . . . . . 481-485

#### **Cytogenetic and molecular cytogenetic characterization of 6 new cases of idiopathic hypereosinophilic syndrome**

Renato Bigoni, Antonio Cuneo, Maria Grazia Roberti, Raffaella Milani, Antonella Bardi, Francesco Cavazzini, Claudia Minotto, Gianluigi Castoldi . . . . . 486-491

#### **Diagnosis of essential thrombocythemia at platelet counts between 400 and 600×10<sup>9</sup>/L**

Stefano Sacchi, Giovanni Vinci, Luigi Gugliotta, Serena Rupoli, Livio Gargantini, Vincenzo Martinelli, Stefano Baravelli, Mario Lazzarino, Guido Finazzi, for the Gruppo Italiano Malattie Mieloproliferative Croniche (GIMMC) . . . . . 492-495

#### **Coexistence of two distinct cell populations (CD56<sup>+</sup>TcR $\gamma\delta$ <sup>+</sup> and CD56<sup>+</sup>TcR $\gamma\delta$ <sup>-</sup>) in a case of aggressive CD56<sup>+</sup> lymphoma/leukemia**

Andrea Camera, Luca Pezzullo, Maria Rosaria Villa, Luigia Luciano, Fabrizio Pane, Barbara Izzo, Piernicola Boccuni, Rosa Di Noto, Luigi Del Vecchio, Francesco Salvatore, Bruno Rotoli . . . . . 496-501

#### **Phase II study of 3-hour infusion of high dose paclitaxel in refractory and relapsed aggressive non-Hodgkin's lymphomas**

René-Olivier Casasnovas, Corinne Haioun, Charles Dumontet, Jean Gabarre, Bruno Richard, Pierre Lederlin, Denis Caillot, Aspasia Stamatoullas, Pierre Morel, Bruno Quesnel, Jean-Yves Blay, Kamel Bouabdallah, Christian Gisselbrecht for the Groupe d'Etude des Lymphomes de l'Adulte . . . . . 502-507

#### **Dose-intensive melphalan with stem cell support (CM regimen) is effective and well tolerated in elderly myeloma patients**

Antonio Palumbo, Sabrina Triolo, Luca Baldini, Vincenzo Callea, Antonio Capaldi, Valerio De Stefano, Mariella Grasso, Marina Liberati, Claudio Lotesoriere, Raimondo Marcenò, Filippo Marmont, Pellegrino Musto, Maria Teresa Petrucci, Mauro Spriano, Alessandro Pileri, Mario Boccadoro . . . . . 508-513

#### **Differential aspects of the glycoprotein Ib-von Willebrand factor axis in human and pig species**

María J. Zurbano, Ginés Escolar, Magda Heras, Antonio Ordinas, R. Castillo . . . . . 514-519

#### **Quantification of D-dimer using a new fully automated assay: its application for the diagnosis of deep vein thrombosis**

Piedad Villa, Fernando Ferrando, Josep Serra, Hortensia Faus, Yolanda Mira, Amparo Vayá, Justo Aznar . . . . . 520-524

#### **Experience of a single Italian center in genetic counseling for hemophilia: from linkage analysis to molecular diagnosis**

Giuseppe Tagariello, Donata Belvini, Roberta Salviato, Alberto Are, Ercole De Biasi, Anne Goodeve, PierGiorgio Davoli . . . . . 525-529

#### **Unrelated donor bone marrow transplantation as treatment for chronic myeloid leukemia: the Spanish experience**

Enric Carreras, José-Francisco Tomás, Guillermo Sanz, Arturo Iriando, Concha Boqué, Javier López, Rafael Cabrera, Anna Sureda, Valle Gómez-García de Soria, Jorge Sierra, Miguel-Angel Sanz, Antonio Torres on behalf of the Chronic Myeloid Leukemia, Subcommittee of the GETH (Grupo Español de Trasplante Hemopoyético) . . . . . 530-538

## decision making and problem solving

### **Systemic inflammatory pseudotumor, an unusual cause of fever of unknown origin mimicking a malignant lymphomatous process: case-report and review of the literature**

Sara Lombardi, Oliviero Olivieri, Luca Morelli,  
Roberto Corrocher . . . . . 539-543

## case of the month

### **Lymphoid blastic crisis in Philadelphia chromosome-positive chronic granulocytic leukemia following high-grade non-Hodgkin's lymphoma. A case report and review of literature**

Luca Mele, Livio Pagano, Francesco Equitani, Patrizia Chiusolo, Elena Rossi, Gina Zini, Luciana Teofili,  
Giuseppe Leone . . . . . 544-548

## the irreplaceable image

### **Unusual presentation of hairy cell leukemia**

Pierangelo Spedini, Monica Tajana,  
Cesare Bergonzi . . . . . 548

### **Unexpected pulmonary embolism diagnosed by conventional computed tomography**

Rosario Forés, Manuel Ricart, Enric Grau . . . . . 549

## scientific correspondence

### **Influence of sample storage time and temperature on lymphocyte subset counts using a FACScount system**

Adolfo Romero Ruiz, Inmaculada Pérez Fernández,  
José Manuel Perea Baena, Francisco Javier Mérida de la Torre, Gemma Ramírez Ramírez . . . . . 550-551

### **Acute hepatomegaly with severe liver toxicity due to all-trans-retinoic acid**

Granada Perea, Antonio Salar, Alberto Altés, Salut Brunet,  
Jorge Sierra . . . . . 551-552

### **Long-term disease-free acute myeloblastic leukemia with inv(16) is associated with PCR undetectable CBF $\beta$ /MYH11 transcript**

Giovanni Martinelli, Emanuela Ottaviani, Nicoletta Testoni, Vittorio Montefusco, Rocco Pastano,  
Sante Tura . . . . . 552-555

### **Myelofibrosis in myeloid malignancies with 3q26 cytogenetic abnormalities**

Juan Manuel Sancho, Josep Maria Ribera,  
Isabel Granada, José Tomás Navarro, Fuensanta Millá,  
Evarist Feliu . . . . . 555-556

### **CD79b expression in B-cell chronic lymphocytic leukemia**

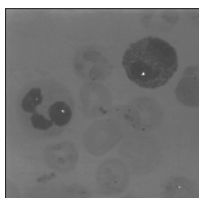
Giovanni D'Arena, Nicola Cascavilla, Pellegrino Musto,  
Rosario Colella Bisogno, Giuseppe Pistolese,  
Mario Carotenuto . . . . . 556-557

### **Non-gastrointestinal MALT lymphomas: a study of 10 cases and comparison with 27 patients with gastrointestinal MALT lymphoma**

Juan Manuel Sancho, Josep Maria Ribera, Manuel Vaquero, Albert Oriol, José Angel Hernández-Rivas,  
Evarist Feliu . . . . . 558-559

### **Spontaneous rupture of spleen during periferal blood stem cell mobilization in a patient with breast cancer**

Vincenzo Pitini, Antonio Ciccolo, Carmela Arrigo,  
Giuseppa Aloï, Carmelo Micali,  
Francesco La Torre . . . . . 559-560



On the cover. An eosinophil cell with gross cytoplasmic granules and a bilobed nucleus showing 1 signal after hybridization with the 5q31 probe; a neutrophil with two 5q31 alleles is shown on the left (see p. 488).